



SIMPLE LIFE



SIMPLE LIFE



Galton Lock, Smethwick, B66

£1,095 PCM

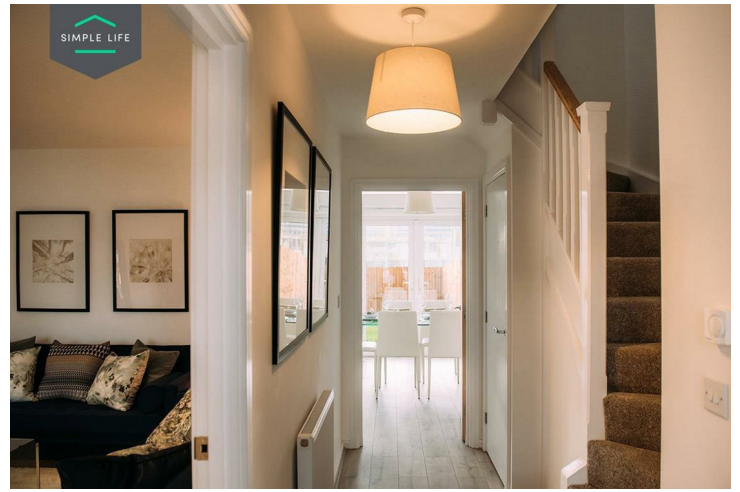
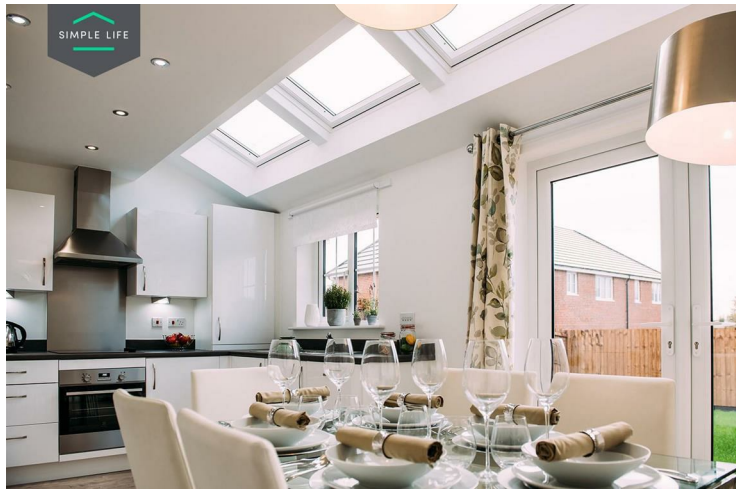
Welcome to Simple Life's Galton Lock homes. Enjoy living in the hub of a friendly community near Sandwell town centre and the bigger town centre of Smethwick in Birmingham; with access to multiple transport links, schools and local amenities

The Ellesmere is a stunning home built with your needs in mind. Downstairs, there is a generous living room, hallway and WC. The rear of the property has a magnificent living/kitchen area with a range of contemporary fitted units with integrated appliances. The room has French windows opening onto and overlooking the rear garden as well as a series of skylights which flood the room with light – an ideal space for both family time and entertaining.

Upstairs there is a spacious family bathroom complete with a bath and shower, a master bedroom with fitted, mirrored wardrobes and two further well-proportioned bedrooms. At the top of the stairs you will also find a handy store cupboard.

Deposit: £1,260
Tenancy Length: 12 Months
Council Tax Band: C
Available 16th November 2023





Key Features

- Private driveway
- Fitted wardrobes to master bedroom
- Fridge freezer
- Oven and hob
- Dark ash style worktops
- Security alarm system
- Dishwasher
- Washing/drying machine
- Light wash wood effect flooring
- Modern, white kitchen units

Location

